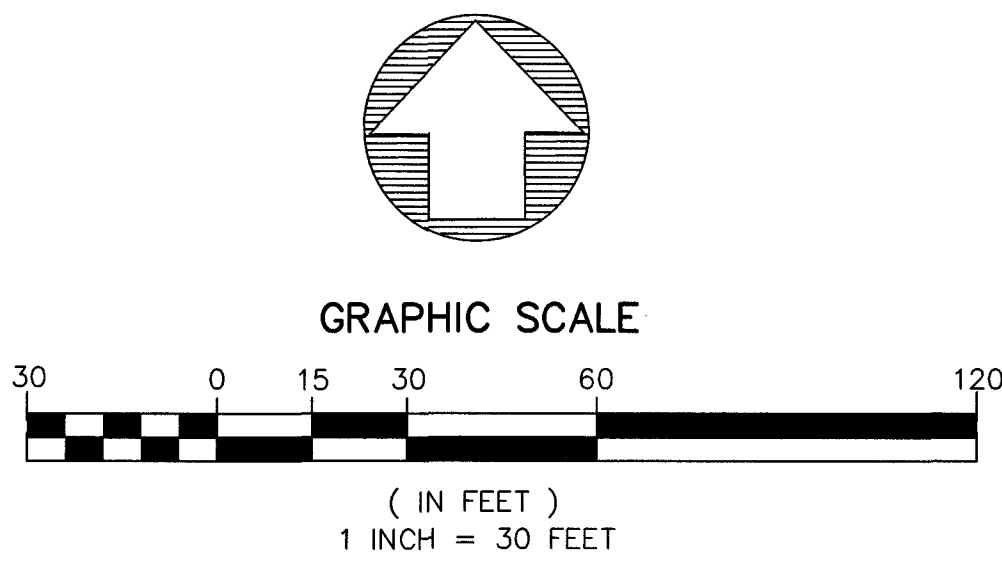


188

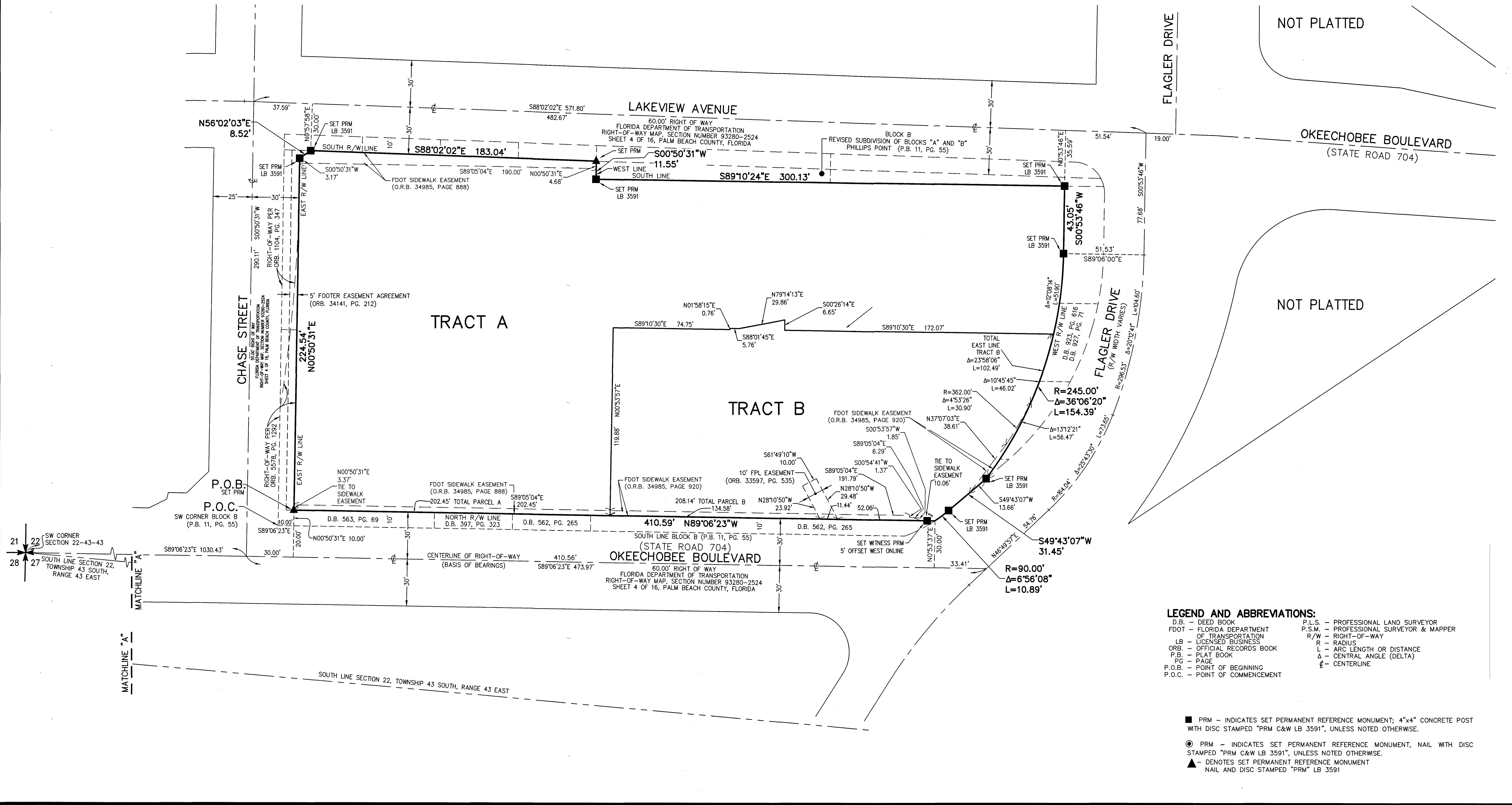
ONE FLAGLER

A REPLAT OF A PORTION OF BLOCK B, REVISED SUBDIVISION OF BLOCKS "A" AND "B" PHILLIPS POINT,
RECORDED IN PLAT BOOK 11, PAGE 55, PALM BEACH COUNTY PUBLIC RECORDS
LYING IN SECTION 21, TOWNSHIP 43 SOUTH, RANGE 43 EAST, CITY OF WEST PALM BEACH, PALM BEACH COUNTY, FLORIDA

THIS INSTRUMENT PREPARED BY
DAVID P. LINDLEY
OF
CAULFIELD & WHEELER, INC.
SURVEYORS - ENGINEERS - PLANNERS
7900 GLADES ROAD, SUITE 100
BOCA RATON, FLORIDA 33434 - (561)392-1991
CERTIFICATE OF AUTHORIZATION NO. LB3591



SHEET 2 OF 2



LEGEND AND ABBREVIATIONS:
D.B. - DEED BOOK
FDOT - FLORIDA DEPARTMENT OF TRANSPORTATION
LB - LICENSED BUSINESS
ORB. - OFFICIAL RECORDS BOOK
P.B. - PLAT BOOK
PG - PAGE
P.O.B. - POINT OF BEGINNING
P.O.C. - POINT OF COMMENCEMENT
P.L.S. - PROFESSIONAL LAND SURVEYOR
P.S.M. - PROFESSIONAL SURVEYOR & MAPPER
R/W - RIGHT-OF-WAY
R - RADIUS
L - ARC LENGTH OR DISTANCE
Δ - CENTRAL ANGLE (DELTA)
C - CENTERLINE

■ PRM - INDICATES SET PERMANENT REFERENCE MONUMENT; 4"x4" CONCRETE POST WITH DISC STAMPED "PRM C&W LB 3591", UNLESS NOTED OTHERWISE.
⊙ PRM - INDICATES SET PERMANENT REFERENCE MONUMENT, NAIL WITH DISC STAMPED "PRM C&W LB 3591", UNLESS NOTED OTHERWISE.
▲ DENOTES SET PERMANENT REFERENCE MONUMENT NAIL AND DISC STAMPED "PRM" LB 3591